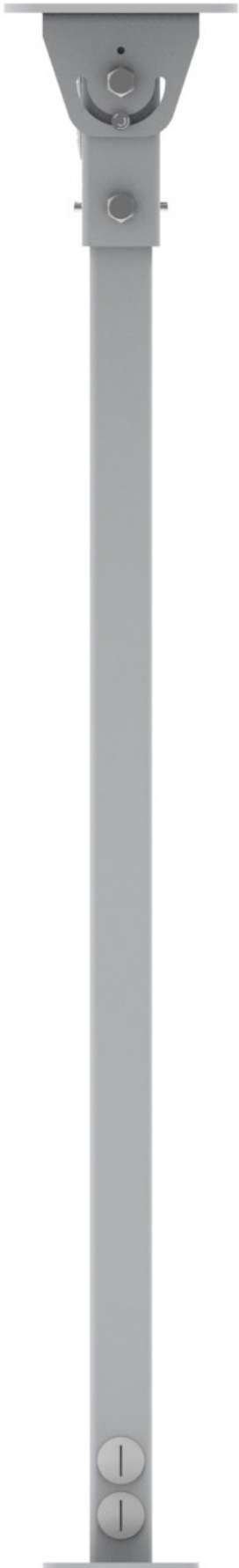


**DATA SHEET FOR**  
**LUNDS STANDARD DROP BRACKET**  
**ONE METRE DROP Part No. 151105-501**  
**TWO METRE DROP Part No. 151105-601**



The 1 Metre and 2 Metre Standard Drop Brackets have been re-designed and are supplied as complete assemblies. Comprising of the Top Plate with it's unique fabricated pivot, the Joint Bracket which is a welded assembly and either the 1 Metre or 2 Metre Drop Rod.

The bracket is designed to be cut to size on site, this will require unfastening the 10mm Hex fastener, cutting the drop rod to suit, re-drilling the 10.5 mm clearance hole and re-assembling the bracket.

The base material for all parts is steel to BS EN 10029 : 1991/BS EN 10051 : 1992 and the welding is to BSEN287 & 288. The bracket meets the IP54 rating to BSEN60529.

The pivoting design allows the bracket to be fitted at an angle while keeping the attached equipment vertical. The locking mechanism built into the Pivot along with Jacking Screws on the Joint Bracket allow the bracket to be locked in position and give the Drop Bracket the required rigidity. The pivot on this design can now rotate through 180° making it suitable for fixing onto overhangs etc. The fixing holes in the base plate are designed to accept a security camera as standard or with the appropriate interface brackets, single, double or 4-way speakers. Other attachments can be made using suitable interface plates and brackets from the Lund's range.



The bracket is suitable for fixing into Brick, Concrete or Steel using appropriate fixings and can also be easily mounted to a unistrut sub-mounting.

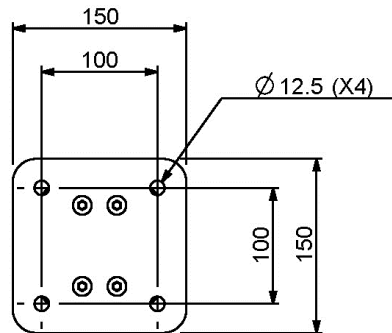
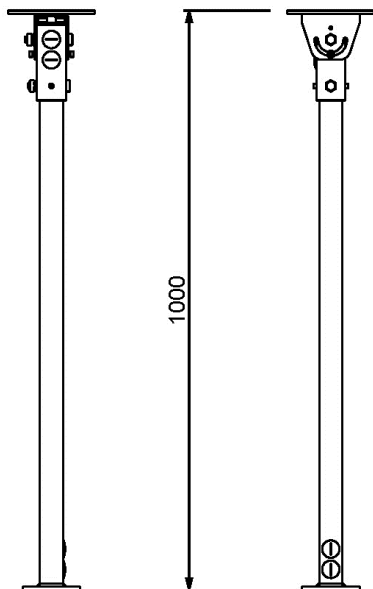
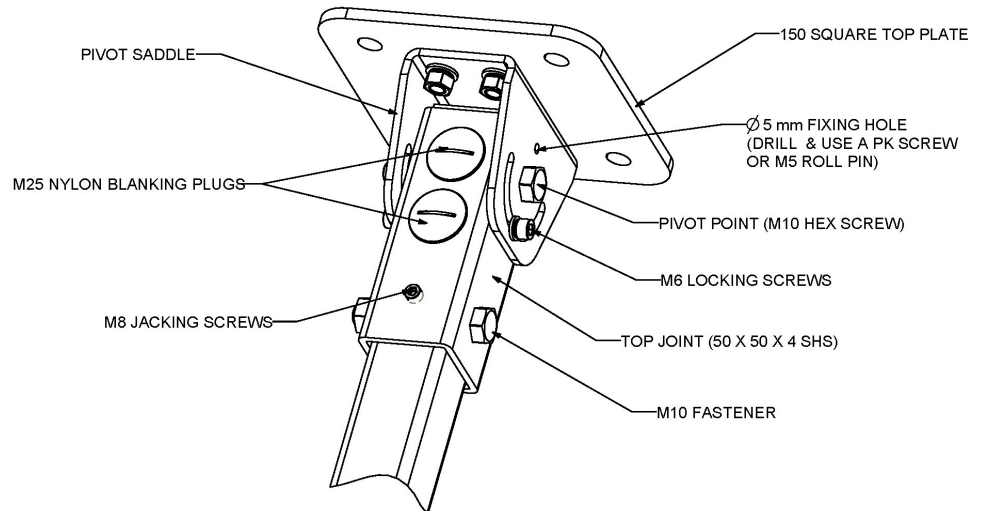
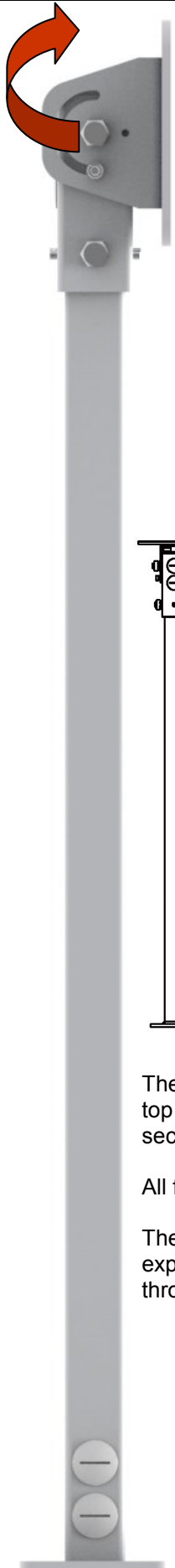
Wiring is achieved with flexible conduit and the bracket is populated with four 25mm conduit tapings for easy assembly. The cable run will be internal. The bracket is supplied with M25 Blanking Caps on all tapings.

The Bracket at 1 metre long has a gross weight of 6 Kilograms and 9.8 Kg at 2 metres. The Standard Dennard Camera DD504-200 weighs approx. 5.7 Kilograms and is attached with suitable M6 fixings. We would suggest bright zinc plated 8.8 grade fixings in all cases and suitable single coil or Shakeproof washers. The calculated vertical load rating of this bracket is in excess of 450 Kg at its longest length without any allowance for wind loadings.

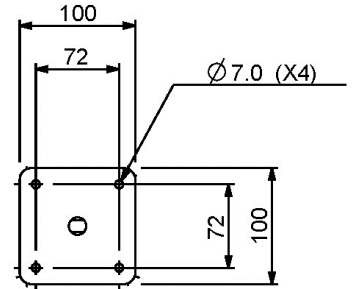
We have added an additional hole in the pivot area to allow for pinning the bracket at the correct angle when high wind loads may cause slippage through the locking point. This will require drilling through on site and we would suggest the use of M5 Roll Pins to secure.

The finish is zinc & colour passivated plating with a DuPont ALESTA or equivalent Powder Paint to either RAL 9006 (White) or NCS 6502-R (Dark Grey) or nearest commercial equivalent. This complies with London Undergrounds No-Smoke, Zero Halogen fire test policy.

**DATA SHEET FOR  
LUNDS STANDARD DROP BRACKET  
ONE METRE DROP Part No. 151105-501  
TWO METRE DROP Part No. 151105-601**



VIEW ON TOP PLATE  
(SCALE X2)



VIEW ON BASE PLATE  
(SCALE X2)

The top fixing plate is 6 mm thick mild steel plate, the pivot saddle bracket is 4 mm thick mild steel plate. The top joint section is 50 X 50 X 4 SHS and the drop section is 40 X 40 X 4 SHS and fits inside the top joint section. The bottom plate is 6 mm thick mild steel plate.

All fixings used are 8.8 grade high tensile steel and finished bright zinc plate.

The illustration on the left shows the bracket with the pivot moved through 90°. It is recommended in exposed conditions that once the correct angle has been established that the Ø5 mm fixing hole is drilled through and either a self tapping screw or a 5 mm roll pin inserted to positively lock the pivot.



**LUND BROS. & Co. Ltd. • BROOKSIDE  
AVENUE • RUSTINGTON • WEST  
SUSSEX • BN16 3LF  
TEL. 01903 784242 • FAX. 01903  
787126 • EMAIL sales@lunds.co.uk •  
WEB. www.lunds.co.uk**