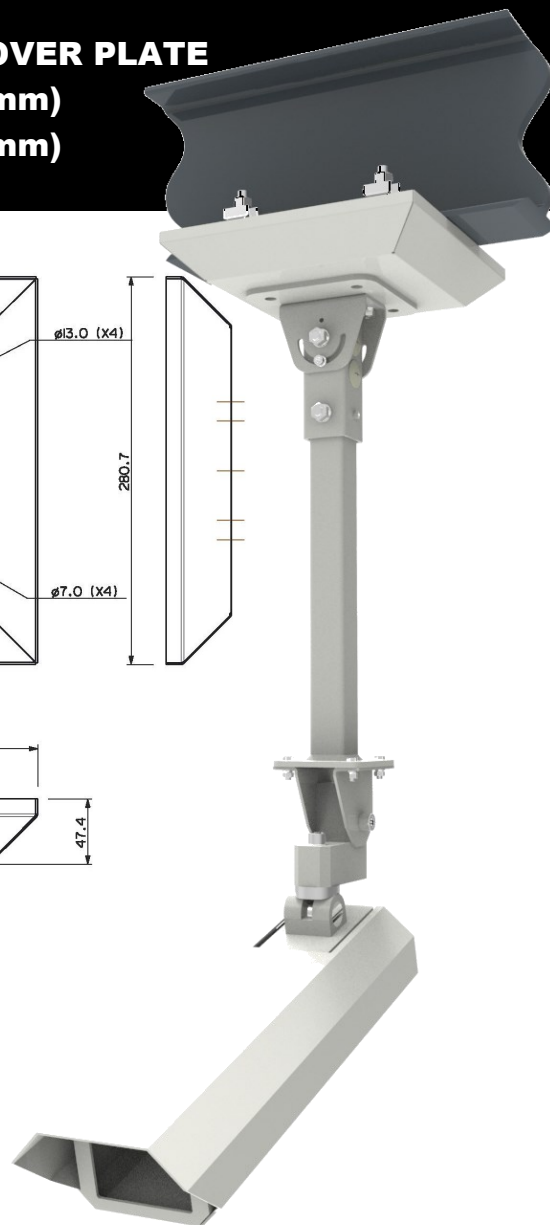
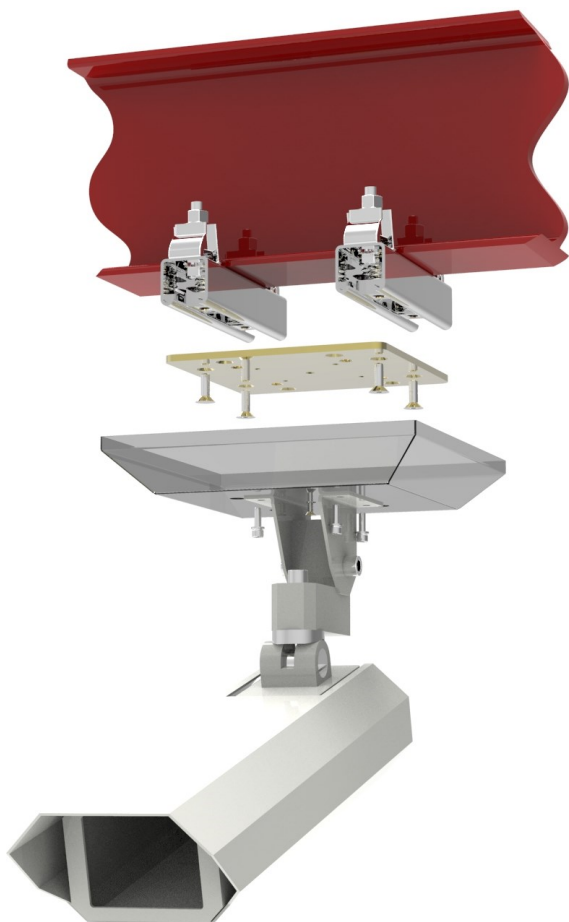
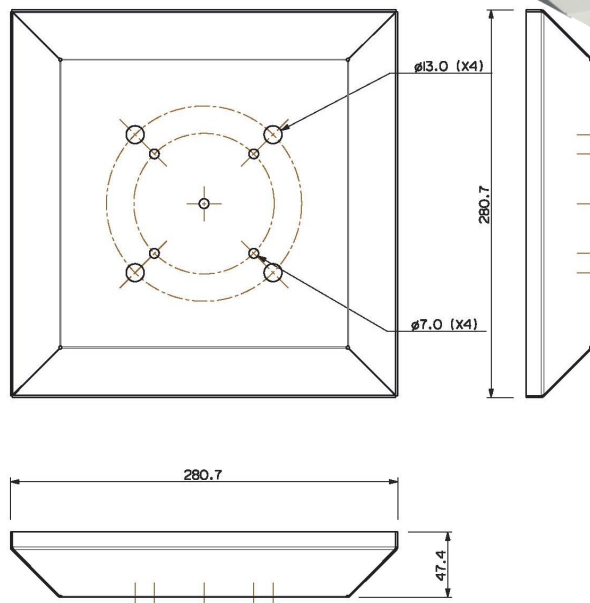
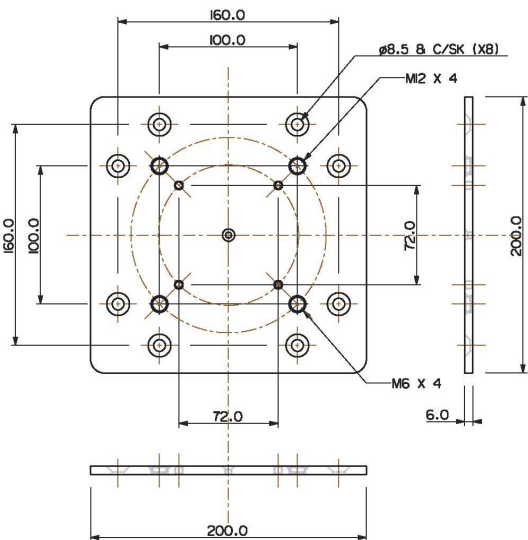


DATA SHEET FOR LUNDS STANDARD ADAPTOR & COVER PLATE

Part No. 211105-500 (200mm)

Part No. 211105-510 (300mm)



The Adaptor & Cover allows for any unistrut fixings to be concealed. The adaptor plate screws directly to the unistrut zebedees and the cover fits between the adaptor plate and either the secondary bracket or equipment. The drillings in the Adaptor plates allow for our Standard Drop Brackets either Part No.151105-501 for the 1 metre long bracket or Part No.151105-601 for the 2 metre long bracket and will directly accept the Dennard 504 Security Camera.

The adaptor plate weighs approx. 1.8 Kilograms and the aluminium cover 0.43 Kg and are attached with suitable fixings. We would suggest bright zinc plated 8.8 grade fixings in all cases and suitable single coil or Shakeproof washers.

The base material for the adaptor plate is 6mm thick steel to BS EN 10029 : 1991/BS EN 10051 : 1992 and the aluminium cover is 2mm thick aluminium to BS EN 485 : PART 1 : 1994 / 5251 welding is to BSEN287 & 288.

The finish is a zinc & colour plating operation and a DuPont ALESTA or equivalent Powder Paint to either RAL 9006 (White) or NCS 6502-R (Dark Grey) or nearest commercial equivalent. This complies with London Undergrounds No-Smoke, Zero Halogen fire test policy.



LUND BROS. & Co. Ltd.
BROOKSIDE AVENUE • RUSTINGTON
WEST SUSSEX • BN16 3LF
TEL. 01903 784242 • FAX. 01903 787126
EMAIL sales@lunds.co.uk
WEB. www.lunds.co.uk