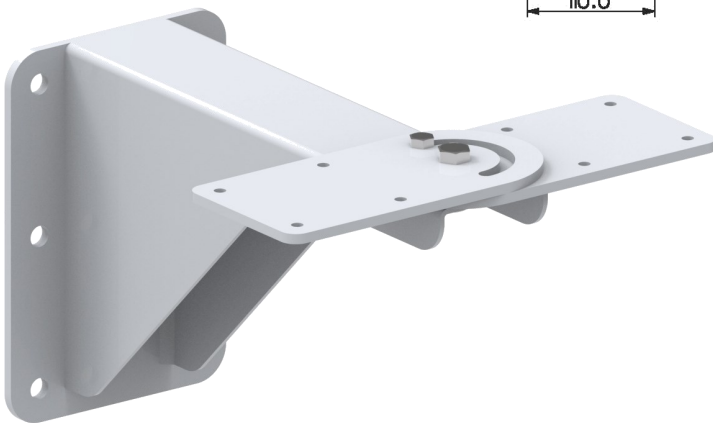
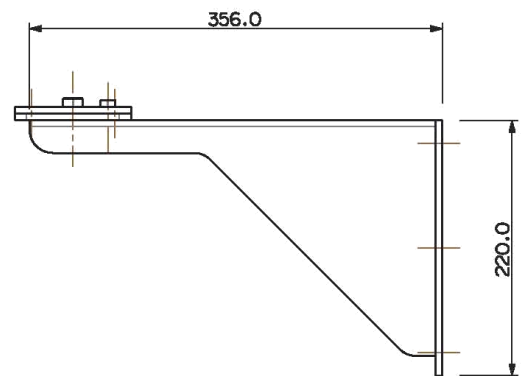
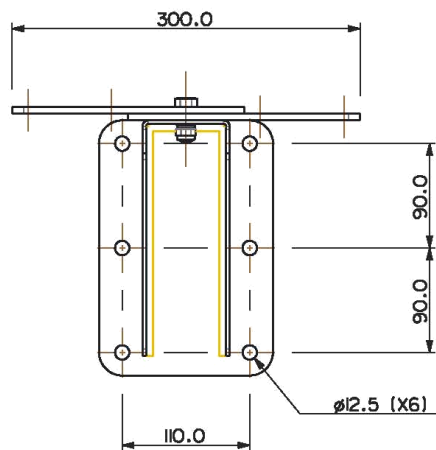
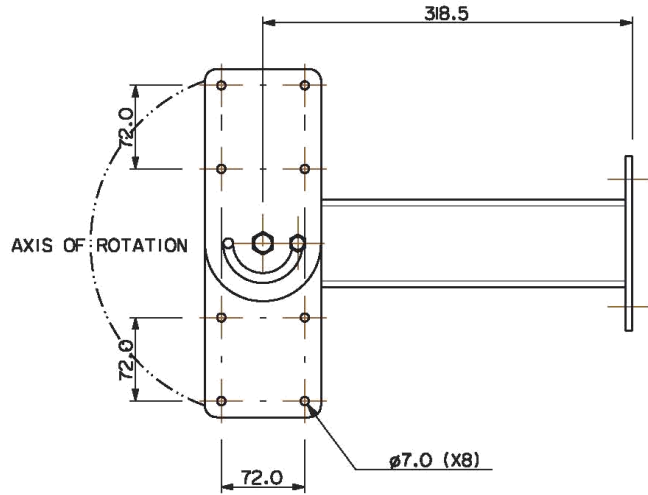
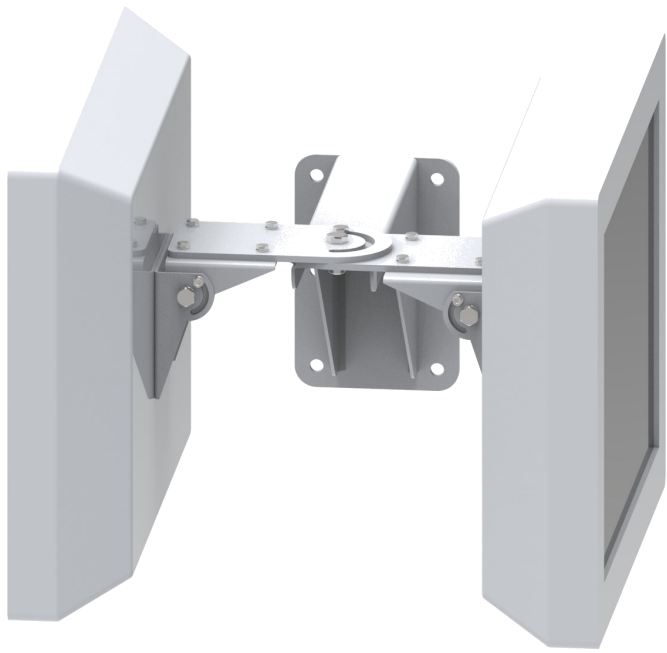


**DATA SHEET FOR  
LUNDS STANDARD DOUBLE PAM WALL MOUNTED BRACKET  
Part No. 281105-300**



The Double Passenger Awareness Monitor Wall Bracket allows two Metronet type PAMs to be securely fixed to a wall or any vertical surface. This bracket configuration will require the addition of 2 VESA 100 or PAM Adaptor Bracket Part No. 281105-200 (shown above) that can be purchased separately.

It allows a back to back configuration and a viewing angle of around 30 degrees for each display.

The bracket assembly weighs approx. 4.75 Kilograms and is attached with suitable fixings. We would suggest bright zinc plated 8.8 grade fixings in all cases and suitable single coil or Shakeproof washers.

Recommended wall mounting is by M12 Kemfix Bolts or equivalent.

The base material is 6mm thick steel to BS EN 10029 : 1991/BS EN 10051 : 1992 and the welding is to BSEN287 & 288.

The finish is a zinc & colour plating operation and a DuPont ALESTA or equivalent Powder Paint to either RAL 9006 (White) or NCS 6502-R (Dark Grey) or nearest commercial equivalent. This complies with London Undergrounds No-Smoke, Zero Halogen fire test policy.



**LUND BROS. & Co. Ltd.**  
**BROOKSIDE AVENUE • RUSTINGTON**  
**WEST SUSSEX • BN16 3LF**  
**TEL. 01903 784242 • FAX. 01903 787126**  
**EMAIL sales@lunds.co.uk**  
**WEB. www.lunds.co.uk**